

### Replacement Parts List

**NOTE:** If requested color is not available, similar color will be substituted.

Part	Cost	Quantity	Total Cost
Crotch Strap/Buckle	\$6.99	X _____	= \$ _____
Harness Straps . . .	\$3.50	X _____	= \$ _____
Full Wrap Seat Pad	\$19.99	X _____	= \$ _____
Locking Clip . . . . .	\$2.50	X _____	= \$ _____
Instructions . . . . .	\$0.00	X _____	= \$ _____

**Merchandise Total** \$ \_\_\_\_\_

**Shipping and handling:** \$ \_\_\_\_\_

Up to \$25.00 . . . . .	\$5.95	\$100.01 to \$150.00 . . . .	\$10.95
\$25.01 to \$50.00 . . . . .	\$6.95	\$150.01 to \$200.00 . . . .	\$11.95
\$50.01 to \$75.00 . . . . .	\$8.95	\$200.01 and up . . . . .	\$13.95
\$75.01 to \$100.00 . . . . .	\$9.95	Outside Continental USA	\$10.00

**Sales Tax** \$ \_\_\_\_\_  
 (Indiana, California, Arkansas, and Massachusetts residents add applicable sales tax.)

**Grand Total** \$ \_\_\_\_\_

No shipping and handling on instructions for quantities under 6. Add \$.50 for each instruction over 6, then add applicable shipping and handling.

**Fill Out For Credit Card**

Visa     Mastercard

Card Exp. Date: \_\_\_\_\_

Cardholder's Name: \_\_\_\_\_

Card Number: \_\_\_\_\_

Signature \_\_\_\_\_

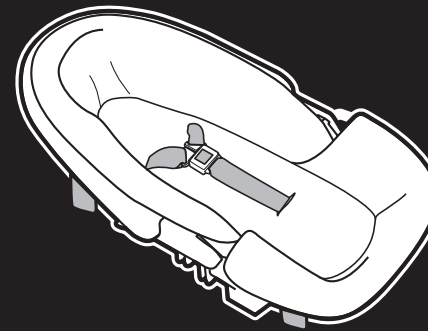
CUT ON DOTTED LINE

Eng. 4358-3137A

# Dream Ride SE Infant Car Bed

## Instruction Manual

www.djgusa.com



This child restraint is designed for use by children whose:

**Weight:**  
5-20 pounds  
(2.3-9 kg)

**Height:**  
19-26 inches  
(48-66 cm)

Read all instructions  
**BEFORE USING** this child restraint.  
KEEP INSTRUCTIONS FOR FUTURE USE.

**▲ IMPORTANT!**

**Failure to follow the warnings on the labels and in the instruction manual can result in the death or serious injury of your child.**

Para recibir las instrucciones en español, llame al  
1-800-544-1108 o solicítase por escrito al dirección por arriba.

## Before You Begin...

Thank you for choosing this car seat, referred to throughout this manual as a child restraint. The DJG family is committed to creating a child restraint with the most comfort and convenience available today.

Remember, parents are a child's first teachers and examples. If you always buckle your seat belt, your child will think it is the natural thing to do. Make it a firm rule that the vehicle does not go until everyone is buckled up. Make no exceptions.

No one can predict if use of a child restraint will prevent injury or death in a particular crash. However, combined with careful driving, proper use of a child restraint can lower a child's risk of injury or death in most crashes.

Your child's safety is worth the time it will take to read and follow these instructions. After reading, if you still have questions or have any problems with this child restraint, please contact our Consumer Relations Department at:

### Dorel Juvenile Group, Inc.

Website: [www.djgusa.com](http://www.djgusa.com)  
 Fax: 1-800-207-8182  
 Mailing Address: Dorel Juvenile Group, Inc.  
 P.O. Box 2609  
 Columbus, IN 47202-2609  
 Telephone: 1-800-544-1108  
 7 A.M. to 6 P.M. EST M-TH  
 7 A.M. to 4:30 P.M. EST FRI

On the back of the shell there is an expiration date for use of this child restraint. Do not use this seat after the expiration date.

## Table of Contents

Warnings.....	2-5
Warm Weather Use and Aircraft Installation .....	5
Understanding Your Vehicle .....	6-7
Child Restraint Parts .....	8-9
Choosing Restraint and Position .....	10
Weight and Height Chart .....	11
Preparing Child Restraint to Fit Your Child .....	12
Crotch Strap Adjustment.....	13-14
Harness Strap Adjustment.....	14-15
Securing Your Child in the Child Restraint .....	16-17
Removing Child From Child Restraint .....	18
Carrier Use.....	19-20
Choosing LATCH or Vehicle Belts.....	21
Knowing Your Vehicle Belts .....	22-23
Locking Clip .....	24-25
Car Bed Use .....	26
Car Bed Installation with Vehicle Belt.....	27-28
Removing Seat Pad for Cleaning .....	29-30
Trouble Shooting .....	31
Warranty .....	32
Registration and Recall .....	36
Replacement Parts Order Form .....	36-38

**! WARNING**

Failure to follow these warnings can result in the serious injury or death of your child. To help you recognize those instructions which are most critical for your child's safety, we use this symbol **!**:

- ! According to accident statistics, children are safer when properly restrained in the rear seating positions than in the front seating positions.**
- ! Always place this child restraint sideways with the child's head toward the center of vehicle.**
- ! Never place a child less than one-year old forward facing.**
- ! Check vehicle's owner manual for more information about air bag/child restraint use.**
- ! For vehicles with an air bag, but without a back seat, refer to your vehicle owners manual.**
- ! The harness length must be correct for your child's size.**
- ! The harness must be snug.**

2

**! WARNING**

- ! The vehicle belt must stay tight at the belt path. If you don't, your child could be injured or killed.**
- ! Never take your child out of the child restraint or try to tend to your child's needs while the vehicle is moving. Never leave child unattended.**
- ! Do not use a child restraint with damaged or missing parts.**
- ! Do not use cut, frayed or damaged harness straps.**
- ! Do not substitute parts or try to modify the child restraint in any way.**
- ! Do not use a child restraint that has been in a crash. You must get a new child restraint.**
- ! Use the child restraint only on vehicle seats that face forward. Do not use on seats that face the sides or rear of the vehicle.**
- ! Do not lubricate buckles and fasteners.**
- ! Check the vehicle belt before each use. Use only if the belt can be tightened properly and securely.**

3

**! WARNING**

**! This child restraint should be securely belted in the vehicle even when not in use. In a crash or sudden stop, an unsecured child restraint could injure other occupants.**

**! Never allow any child to play with this child restraint; it is not a toy.**

**! Do not use this child restraint when the top of your child's head comes within one inch of the top of the child restraint.**

**! Dorel Juvenile Group does not recommend the use of any child restraint accessories except those recommended by DJG.**

**! Read instructions for other warnings.**

**! Do not remove any of the warning labels or other labels on the child restraint.**

**! Placing your child in a hot child restraint may result in burns.**

**! Do not use additional padding in the head area or place blankets near the child's face. Watch child closely.**

**! WARNING**

**! Review vehicle's owner manual for use of child restraint and front passenger side airbags.**

***Warm Weather Use***

**To avoid your child being seriously burned, take the following precautions:**

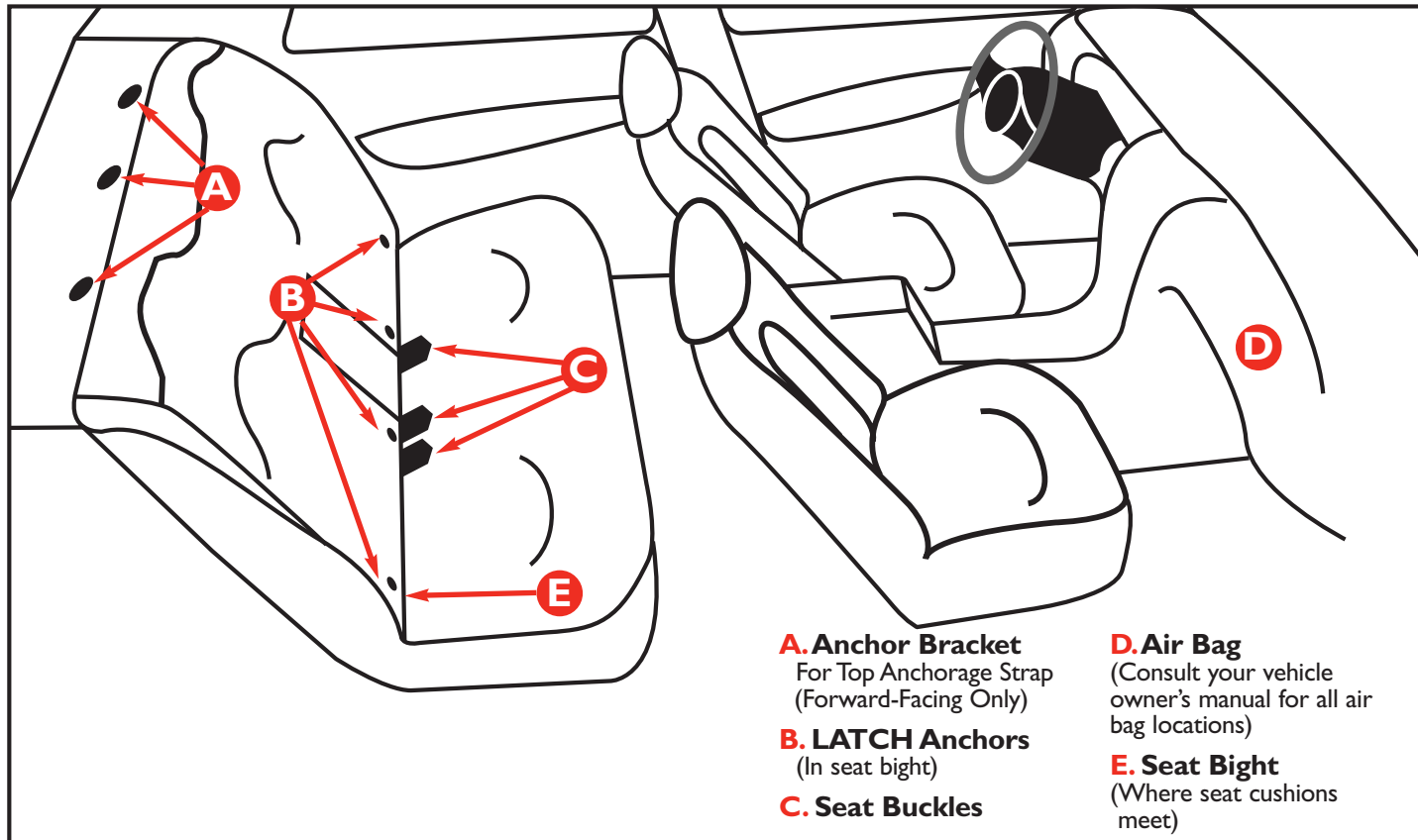
1. Park in the shade or where sun does not directly hit the child restraint.
2. Cover the child restraint with a sheet or blanket when not in use.
3. Check for hot seat and buckles before placing child in child restraint.

***Aircraft Installation***

This restraint is not certified for aircraft use.

## Understanding Your Vehicle

Your vehicle's features may be considerably different than those pictured here. Consult your vehicle owner's manual to help identify your vehicle's specific features.



**A. Anchor Bracket**  
For Top Anchorage Strap  
(Forward-Facing Only)

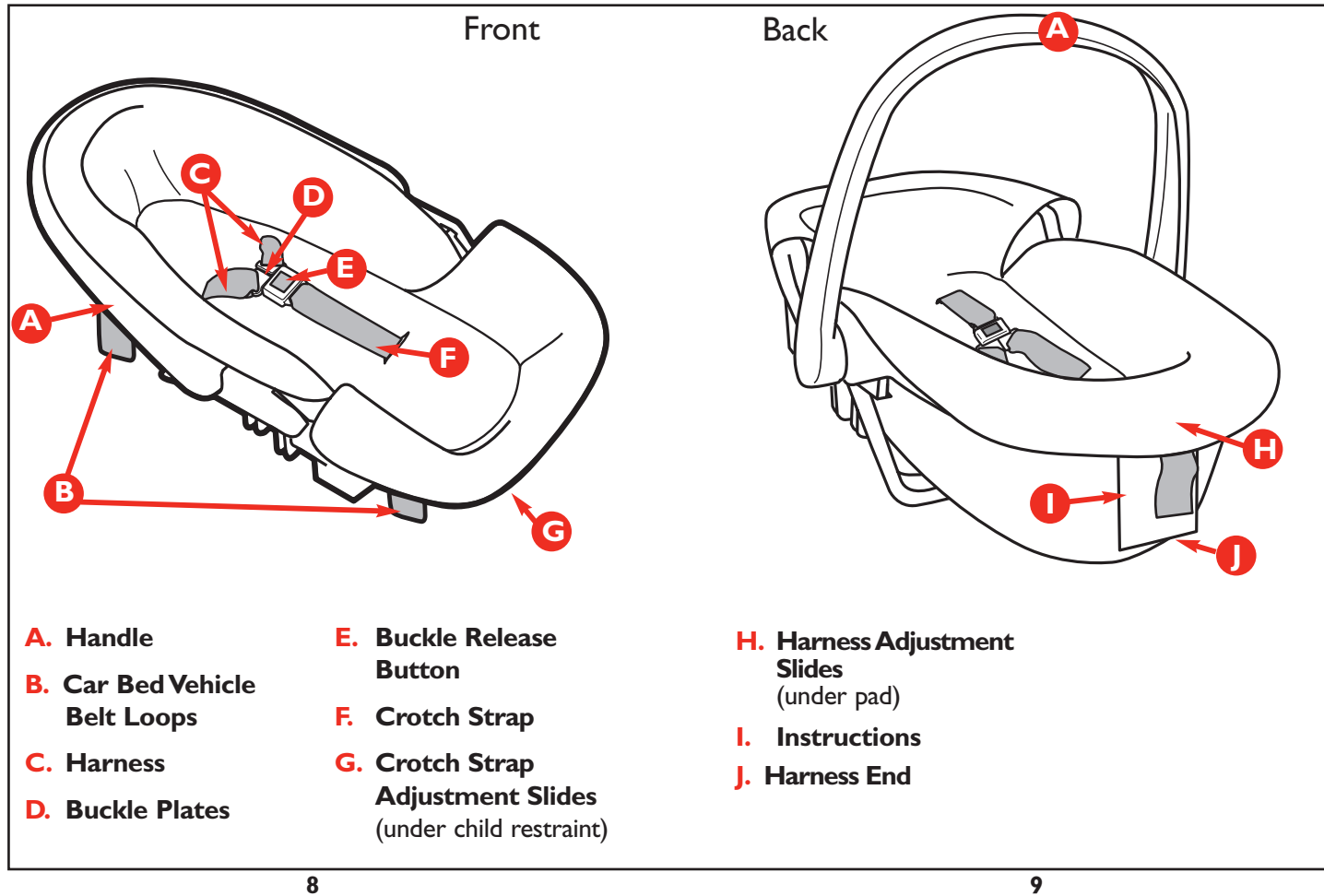
**B. LATCH Anchors**  
(In seat bight)

**C. Seat Buckles**

**D. Air Bag**  
(Consult your vehicle  
owner's manual for all air  
bag locations)

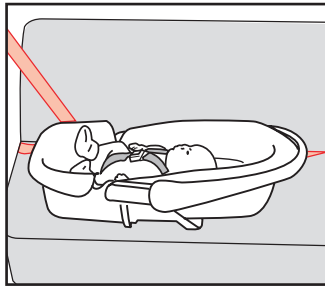
**E. Seat Bight**  
(Where seat cushions  
meet)

## Child Restraint Parts



## Choosing Restraint and Position

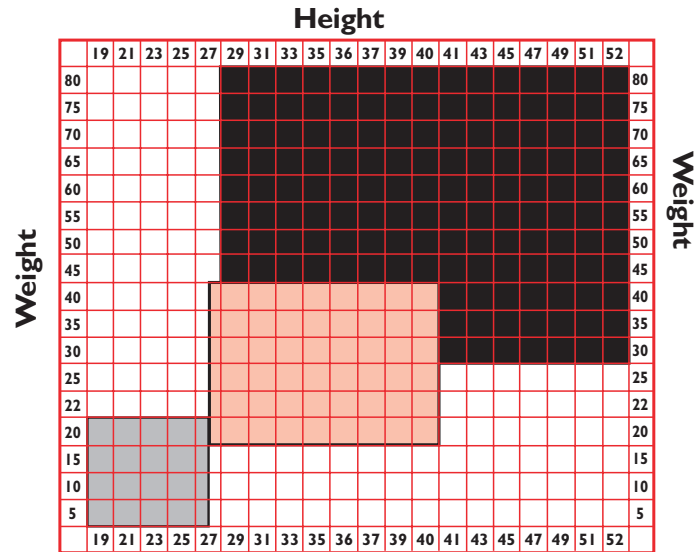
Your child's height, weight and age determine how your child restraint should be placed in the vehicle and which restraint should be used. See chart on next page.



Child and child restraint face the side. Child's head is toward center of vehicle seat and is placed in the back seat.

## Weight and Height Chart

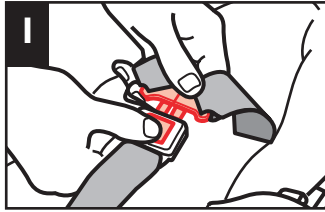
**NOTE:** If your child does not meet the criteria for the Side-Facing position, do not use this child restraint!



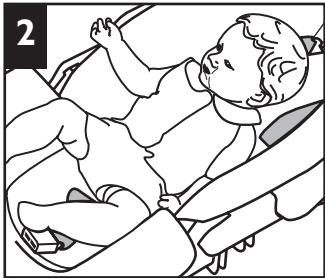
- Side-Facing**  
5-20 lbs. (2.3-9 kg) **AND** 19"-26" tall (48-66 cm.).
- Forward-Facing**  
Over 1 year old **AND** 22-40 lbs. (10-18 kg.) **AND** 29"-43" tall (74-109 cm.).
- Belt-Positioning Booster**  
30-80 lbs. (14-36 kg) **AND** 34"-52" (86-132 cm.).

## Preparing Child Restraint to Fit Your Child

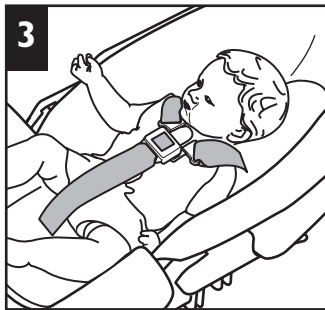
You **MUST** make these adjustments with your child before you use the child restraint or install it in the vehicle.



Press red button on buckle to release the buckle plates. Pull buckle plates out. Place harness straps and crotch strap out of the way.

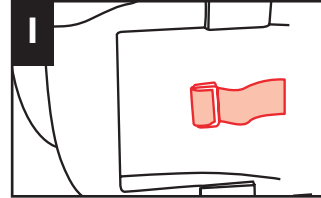


Place the child's bottom and back flat against the child restraint. This will increase comfort and allow the harness to properly tighten.



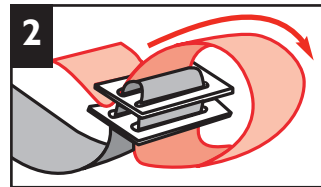
**Check Harness and Crotch Strap Lengths:** Position harness straps over the child's shoulders and the crotch strap between the legs. The buckle should lay at mid-chest and the buckle plates should reach buckle. Adjust crotch strap and/or harness straps if needed.

12

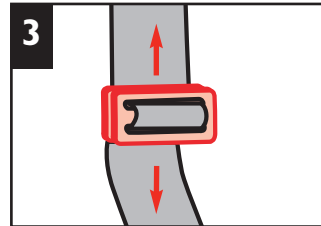


### Adjusting Crotch Strap:

Locate crotch strap adjustment slides under the shell.

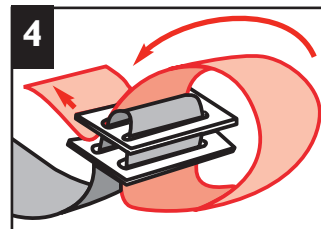


Unlace free end of crotch strap from adjustment slides.



### To Shorten:

Move the adjustment slides closer to shell.



### To Lengthen:

Move adjustment slides away from shell.

Relace free end of crotch strap between slides. Pull tight.

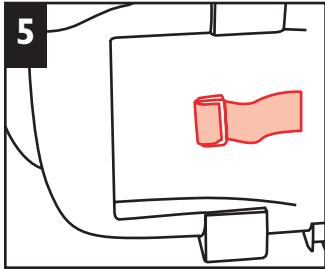
13

continued on next page.

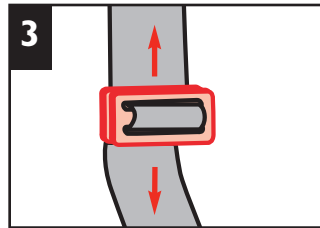
## ⚠ WARNING

**Failure to reattach the crotch strap correctly, can result in serious injury or death.**



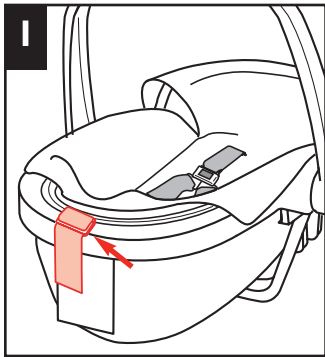


Pull on crotch strap so adjustment slides are flush against the shell.



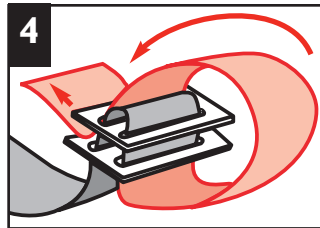
**To Shorten:**  
Move the adjustment slides closer to shell.

**To Lengthen:**  
Move adjustment slides away from shell.

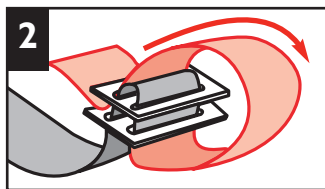


**Adjust Harness Straps:**

Locate harness strap adjustment slides under the pad.



Relace free end of harness strap between slides. Pull tight.

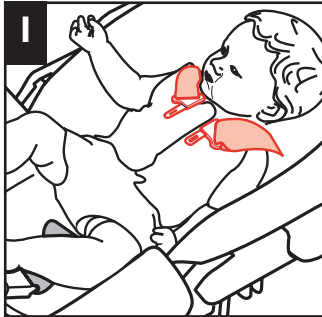


Unlace free end of harness strap from adjustment slides.

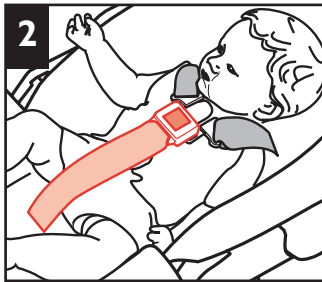
**⚠ WARNING**

**Failure to reattach the harness strap correctly, can result in serious injury or death.**

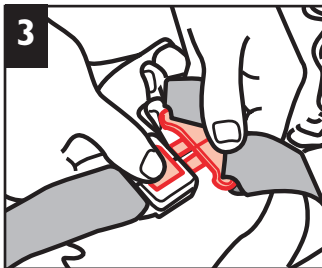
## Securing Your Child in the Child Restraint



1 Position harness straps over the child's shoulders.

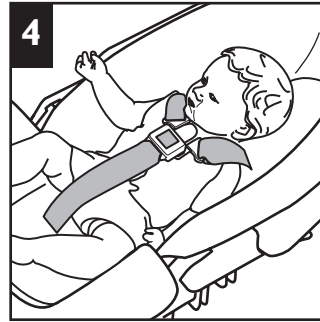


2 Position crotch strap between legs.



3 Hold buckle plates with one hand and buckle with the other. Push buckle plates into buckle until you hear a "click." Pull up on harness to make sure buckle is locked.

16



4 The buckle should lay at mid-chest and should be snug.

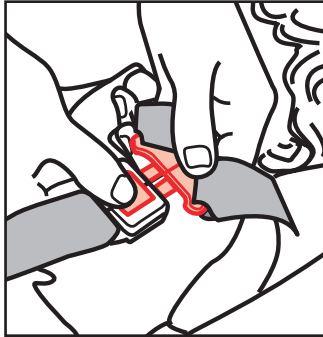
**NOTE:** A snug strap should not allow any slack. It lies in a relatively straight line without sagging. It does not press on the child's flesh or push the child's body into an unnatural position. Adjust crotch strap and/or harness straps if needed.

### **⚠ WARNING:**

**Failure to fasten and tighten the harness system correctly can result in serious injury or death.**

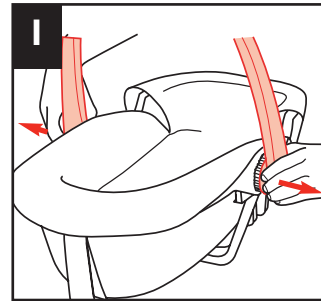
17

## Removing Your Child From the Child Restraint

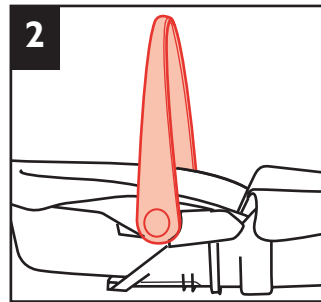


Press red button on buckle to release the buckle plates. Pull buckle plates out. Place harness straps and crotch strap out of the way. Remove child.

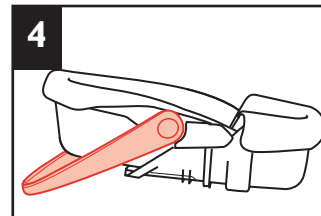
## Carrier Use



**To Adjust Handle:**  
Pull handle out from shell on both sides. Rotate up or down to desired location. Make sure both sides of handle are locked before using.



**Car Bed Carrier:**  
The handle must be in the most upright position.



**Rocker:**  
Rotate handle all the way back.

## **⚠ WARNING**

Read ALL instructions before using carrier.

**NEVER** use carrier unless child is properly secured.

For use as a carrier by children weighing less than 20 pounds (9 kg) and less than 26 inches (66 cm) tall.

**NEVER** leave child unattended. Always keep child within arm's reach.

**Suffocation Hazard:** Infant carrier can roll over on soft surfaces and suffocate child.

**NEVER** place carrier on beds, sofas or other soft surfaces.

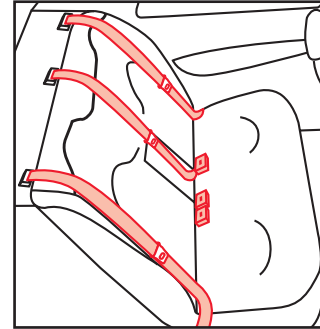
**Strangulation Hazard:** Child can strangle in loose restraint straps. **NEVER** leave child in carrier when harness straps are loose or undone.

**Fall Hazard:** Child's movement can slide carrier. **NEVER** place carrier near edges of counter tops, tables or other elevated surfaces.

Do not use the carrier if it is damaged or broken, or if any parts are missing.

## **Choosing LATCH or Vehicle Belts**

### **Vehicle Belts**



You can not use LATCH with this product. You will use your vehicle's belts only. In most cases you will use the lap/shoulder belt combination. There are some vehicle belts that will not work with a child restraint or will require special attention. See next page for specific instructions.

## Knowing Your Vehicle Belts

Not all vehicle belts will work with this child restraint. You must determine if your vehicles belts are compatible with this child restraint. If you will use the LATCH system, refer to the LATCH section.

### ELR - Emergency Locking Retractor Belts

**Definition:** These belts only lock in a sudden stop or crash. To see if you have this type of belt, pull on the lap belt, let it return part way, then pull on it again. If it moves freely, it is an ELR belt and the child restraint could work loose during normal driving. Refer to your vehicle owner's manual.

ELR shoulder belts either require a locking clip or cannot be used with any child restraint.

ELR lap-only belts must be replaced with a manual belt; contact your vehicle dealer. A locking clip will not correct this problem.

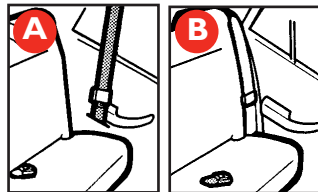
### Automatic/Passive vehicle seat belts

The automatic (passive) 2-point belt has no lap belt. You must install a lap belt to secure a child restraint. You may also need to install an extra lap belt for an automatic 3-point belt. Refer to the vehicles owner's manual. A locking clip will not correct this problem.

### Vehicle belt too short

Contact your vehicle dealer for a seat belt extender.

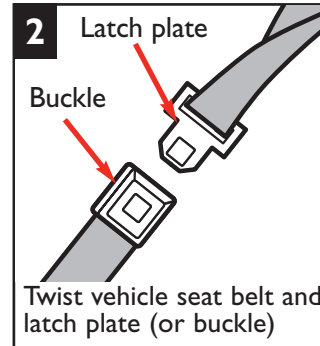
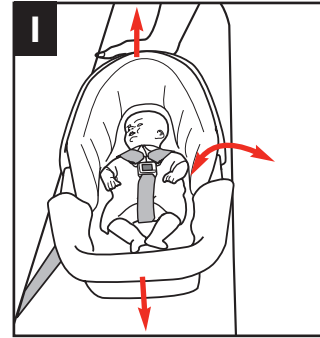
### Belts in center of the door or side panel (A) or middle of the vehicle seat cushion (B).



You must move the child restraint to another seating location. A locking clip will not fix this problem.

See "Locking Clip" section.

22



### Manual Belts

Manual lap can allow the child restraint to loosen when it is tilted or jarred. After tightening the lap belt securely, tilt and push the child restraint forward and to both sides. If no loosening occurs, your child restraint should be secure.

If loosening does occur, try the following: If the buckle plate slides on the belt, turn the buckle plate over. If the buckle slides, turn the buckle. Refasten the vehicle lap belt. The release button should face **out** after twisting so that it is easy to reach in an emergency.

If the lap belt continues to loosen, the child restraint must be moved to another location in the vehicle. A locking clip will not correct this problem; see your vehicle owner's manual.

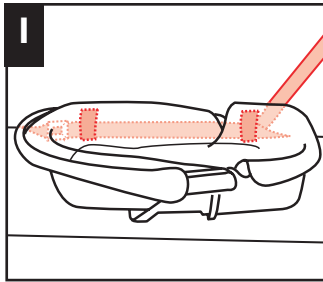
## ⚠ WARNING

**Failure to check and adjust the manual belt as described above can result in serious injury or death.**

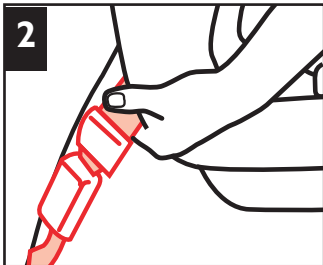
## Locking Clip

**NOTE:** Remove the locking clip when the seat belt is not being used with a child restraint. The locking clip is located on the back of the seat. **A locking clip will not fix all types of seat belt problems.**

Before you put your child restraint in the vehicle, buckle the lap/shoulder belt. Pull on the lap belt portion. If it loosens or slips, you must either use a locking clip to hold the seat belt tight or move the child restraint to another seating location.

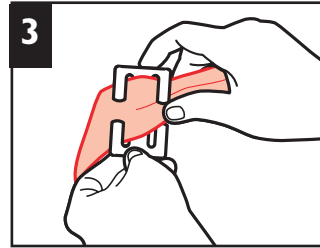


1 Thread both vehicle lap and shoulder belts through the belt path. Make sure shoulder belt follows lap belt path. Buckle. Pull up on shoulder belt until all slack is out and lap belt is tight.

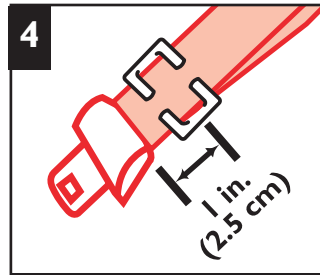


2 Grasp both vehicle belts together just behind the buckle plate and unbuckle.

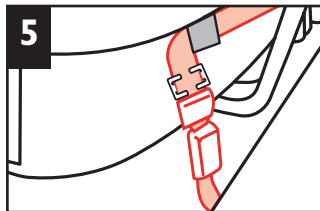
24



3 Thread both portions of the vehicle belt onto the locking clip.



4 Position locking clip about 1 in. (2.5 cm) from vehicle belt's buckle plate.



5 Rebuckle belt. Lap belt portion should now be tight. If not, remove locking clip and repeat all steps.

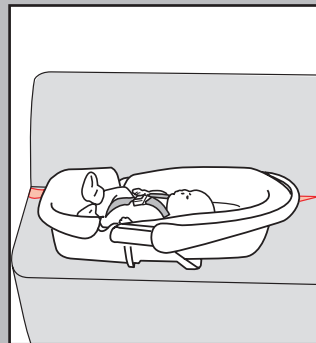
25

Rear Facing Use: 5-20 lbs. (2.3-9 kg), 19-26" (48-66 cm), Under 1 year of age.

### Car Bed Use



Lap/Shoulder Belt



Lap Belt

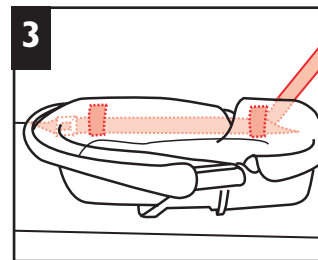
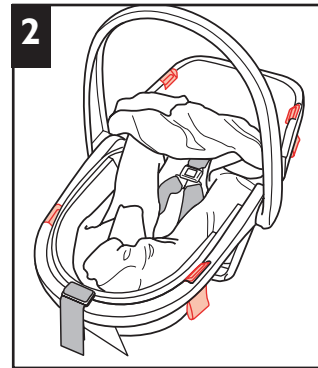
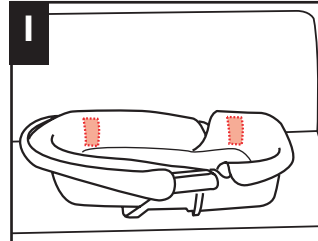
### ⚠ WARNING:

Failure to place this child restraint **side-facing with the child's head toward center of vehicle seat** when the child is between 5-20 lbs. (2.3-9 kg) can result in serious injury or death.

**Install side-facing. The back passenger seat is preferred, however, the front passenger seat is acceptable, even with an airbag, as long as the child restraint does not interfere with vehicle operation.**

**Check vehicle's owner manual for more information about air bag/child restraint use.**

### Car Bed Installation with Vehicle Belt



Place side-facing in the back seat with child's head toward the center of vehicle seat. Vehicle belt loops must be on the side of the vehicle seat back as shown.

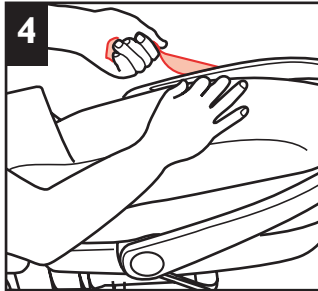
If needed, the vehicle belt loops can be located on either side of child restraint. Pull corners of pad off shell. Lift metal clip out of slot and move to other side. **Both belt loops must be on the same side.**

**NOTE:** Child's head must be towards the middle of vehicle seat.

Thread the vehicle lap or lap/shoulder belt combination through belt guides as shown. Buckle vehicle belt.

continued on next page.

Rear Facing Use: 5-20 lbs. (2.3-9 kg), 19-26" (48-66 cm), Under 1 year of age.



4 Lay your forearm across child restraint while pulling up on belt to tighten. For a manual belt, refer to "Knowing Your Vehicle Belt" section. Pull on shoulder strap to remove any slack.



5 With weakest hand on child restraint, tilt and push the base forward and back, and from side to side. If the seat belts do not loosen, your child restraint should be secure.

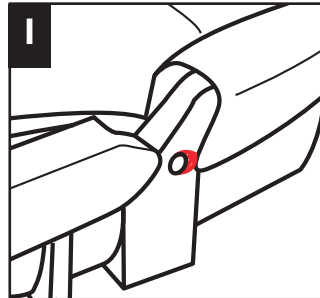
**NOTE:** Some "play" from front to back or about an inch from side to side is acceptable. If it moves

more, review "Knowing your Vehicle Belts" and "The Locking Clip" sections.

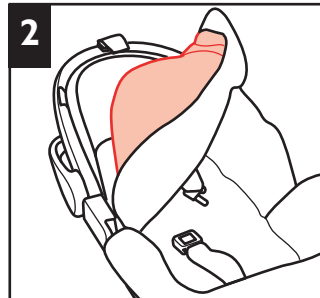
**⚠ WARNING**

Using this child restraint in any vehicle seat where the lap belt cannot be tightened securely and properly or where it can be loosened by pulling on it can result in serious injury or death.

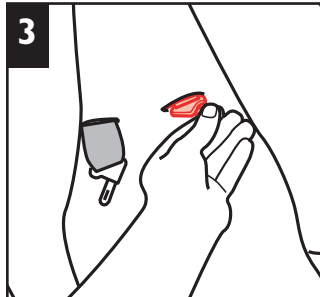
**Removing Seat Pad for Cleaning**



1 Undo the elastic strap from plastic button on each side of shell.

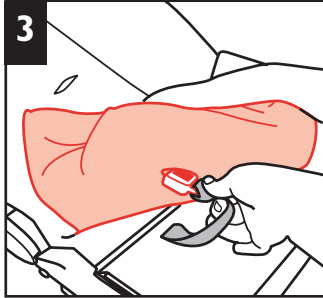


2 Pull pad off top of shell.



3 Push buckle plates through pad.





**3** Pull pad off bottom of shell. Pull buckle through pad.

Clean with warm sudsy water; rinse clean, air dry. Do not use bleach or other harsh cleaners.

**Replace seat pad by reversing order.**

Pull buckle through pad and wrap pad around bottom of shell. Pull buckle plates through pad and wrap pad around top of shell. Make sure harness and crotch straps are not twisted. Reattach elastic to sides of shell.

## Trouble Shooting

**✓ 1. If your child restraint is not held securely by the belt:**

Press down firmly on the child restraint and remove all the slack in the belt. Make sure the belt buckle is not up against the child restraint where the belt cannot be tightened. Review Locking Clip section. If you cannot secure the child restraint tightly, move it to another seating location.

**✓ 2. If the child restraint buckle or harness adjustment lever sticks or you cannot get the straps tight enough around child:**

**DO NOT LUBRICATE.** Check around buckle and harness release lever for dropped food, sticky spilled drinks, dirt, leaves, etc. Clean with warm water and/or remove object with tweezers. If you cannot get the harness to adjust and remain tight with the buckle securely locked, do not use the child restraint. **If the buckle plate will not lock securely, go to [www.djgusa.com](http://www.djgusa.com) or call 1-800-544-1108 for assistance.**

**✓ 3. If your harness twists or ropes:**

Straighten the harness each time you put your child in the seat to help prevent twisting. Lock the buckle and tighten harness and it will be ready for next use.

## Warranty

Dorel Juvenile Group, Inc. (DJG) warrants this product to the original retail purchaser as follows:

This product is warranted against defective materials or workmanship for one year from the date of original purchase. **An original receipt is required to validate your warranty.** DJG will, at its option, provide replacement parts or replace this product. DJG reserves the right to substitute if the part or model has been discontinued.

To make a claim under this warranty you may contact us at [www.djgusa.com](http://www.djgusa.com), fax us at 1-800-207-8182 24 hours a day, write to DJG, Consumer Relations Department, P O Box 2609, Columbus, IN 47202-2609, or call 1-800-544-1108 from 7:00 a.m. to 6:00 p.m. EST Monday through Thursday and from 7:00 a.m. to 4:30 p.m. on Friday.

**Proof of purchase is required and shipping charges are the responsibility of the consumer.**

### Warranty Limitations:

This warranty does not include damages which arise from misuse or abuse of this product.

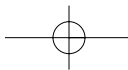
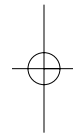
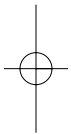
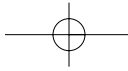
### Limitation of Damages:

The warranty and remedies as set forth are exclusive and in lieu of all others, oral or written, expressed or implied. In no event will DJG or the dealer selling this product be liable to you for any damages, including incidental or consequential damages, arising out of the use or inability to use this product.

### Limitation of warranties and other warranty terms and state law rights:

Any implied warranties, including implied warranties of the merchantability and fitness for a particular purpose, shall be limited to the duration and terms of the express written warranty. Some states do not allow limitations as to how long an implied warranty lasts or the exclusion or limitation of incidental or consequential damages, so the above limitations may not apply to you. This warranty gives you specific legal rights, and you may have other rights, which vary from state to state. Neither DJG nor the dealer selling this product authorized any person to create for it any other warranty, obligation, or liability in connection with this product.

PLEASE COMPLETE AND MAIL THE PRE-ADDRESSED OWNER REGISTRATION CARD WITHIN (30) DAYS OF PURCHASE TO EXPEDITE WARRANTY CLAIMS AND TO VERIFY THE ORIGINAL DATE OF PURCHASE.



### Registration and Recall Information

Child restraints could be recalled for safety reasons. You must register this restraint to be reached in a recall. Send your name, address and the restraint's model number and manufacturing date to:

Dorel Juvenile Group, Inc.  
PO Box 2609, Columbus, IN 47202-2609  
Attn: Consumer Relations or visit [www.djgusa.com](http://www.djgusa.com)  
or call 1-800-544-1108

For recall information, call the U.S. Government's Auto Safety Hotline at 1-800-424-9393 (202-366-0123 in the Washington D.C. area).

### Replacement Parts Order Form

Complete the form on next page. Your model number with color code and manufacturer date code MUST be included on the form to ensure proper replacement parts. Your model number with color code and the date code can be found on a sticker on the side of child restraint. Payment in U.S. dollars must accompany your order. Choose parts needed from the list on the back of these instructions.

Return the form with payment to:

**Dorel Juvenile Group, Inc.**  
**Consumer Relations Department**  
**P.O. Box 2609**  
**Columbus, IN 47202-2609**

Fax orders to: 1-800-207-8182

Please make money orders payable to Dorel Juvenile Group, Inc. Fill in the area below to charge to Visa or Mastercard. We do not except personal checks or Discover Card. All outside of U.S. and Canada MUST use credit card.

### Replacement Parts Order Form

Ship To (Please Print): \_\_\_\_\_

Name: \_\_\_\_\_

Address: \_\_\_\_\_

City: \_\_\_\_\_

State/Province: \_\_\_\_\_ Zip \_\_\_\_\_

Telephone: \_\_\_\_\_

Email Address: \_\_\_\_\_

**We MUST have this information to process your order:**

**Model Number (5 digits & 3 letters):** \_\_\_\_\_

**Manufacture Date (mm/dd/yyyy):** \_\_\_\_\_